



May 3-12, 2007
Santa Cruz Yacht Club
Santa Cruz, California USA

SAILING INSTRUCTIONS

1. RULES

- 1.1. The regatta will be governed by the rules as defined in *The Racing Rules of Sailing (RRS)*.
- 1.2. The prescriptions of the United States National Authority (**US SAILING**) will not apply, except its prescriptions to RRS 68 (Damages), RRS 76.1 (Exclusion of Boats or Competitors) and RRS 76.3 (Exclusion of Boats or Competitors), which are included as Appendix E to the sailing instructions, and will be posted on the official notice board.
- 1.3. *The Equipment Rules of Sailing* will apply.
- 1.4. English will be the official language of the regatta. Where there is a conflict or ambiguity between text and diagrams, the text shall take precedence.
- 1.5. All competitors are required to wear a life jacket or other adequate personal flotation device while racing except for brief periods while changing clothing. This changes RRS Part 4 Preamble and 40.1
- 1.6. In accordance with ISAF Regulation 20, Advertising Code, the Melges 24 Class is Category C.
- 1.7. The ISAF Sailor Classification Code will apply for competitors competing for the "Challenge Henri Samuel Trophy", in accordance with the IMCA regatta regulations.
- 1.8. The Skipper/Owner shall be responsible for the actions of his or her crew. Minors will not be served and proof of age will be required. In the event of a serious breach of conduct, sportsmanship, destruction of property, under age drinking, or failure to comply with the request of any Race Official, Committee Member or agent of the regatta, the Skipper/Owner will be held responsible and the boat or competitor may be subject to action by the International Jury under RRS 69.

2. NOTICES TO COMPETITORS

- 2.1. Notices to competitors will be posted on the official notice board(s) located on a bulletin board adjacent to the regatta office.
- 2.2. The Race Office is located in the dry storage yard below the Santa Cruz Yacht Club. The Race Office will be open during registration and during protest hours.
- 2.3. Any questions concerning these sailing instructions, scoring, or any other racing issues shall be submitted in writing to the race office. Forms to submit inquiries are available there. All written inquiries and responses will be posted on the official notice board.

3. CHANGES TO SAILING INSTRUCTIONS

- 3.1. Changes to the sailing instructions will be posted prior to 1000 on the day it will take effect. Changes to the schedule of races will be posted by 1900 on the day before it will take effect.

4. **SIGNALS MADE ASHORE**

- 4.1. Signals made ashore will be displayed from halyards on the flag pole located on the deck of the Santa Cruz Yacht Club.
- 4.2. When flag AP is displayed ashore, 'one (1) minute' is replaced with 'not less than sixty (60) minutes' in the race signal AP.
- 4.3. Flag B hoisted with one sound signal means "Protest time has begun". When lowered half way it means, "There are less than thirty (30) minutes of protest time remaining". When lowered it means "Protest time has ended".

5. **SCHEDULE OF RACES**

5.1. Pre-Worlds Event for The Santa Cruz Commodore's Trophy

- 5.1.1. Saturday May 5th (2 races) 1st start at 1230
- 5.1.2. Sunday May 6th (2 races) 1st start at 1230

5.2. Championship Series:

TUESDAY • 8 MAY	1230	First start	2 Races	
WEDNESDAY • 9 May	1230	First start	2 Races	
THURSDAY • 10 MAY	1230	First start	2 Races	
FRIDAY • 11 MAY	1230	First start	2 Races	
SATURDAY • 12 MAY	1230	First start	2 Races	
	19:00	Trophy Ceremony		
	20:00	Regatta Dinner		

- 5.2.1. In accordance with SI 11.2, an Attention signal will be made 5 minutes before the Warning signal. The scheduled time of the Warning signal for the first race each day is 1225.

- 5.3. The race committee may run a 3rd race on any race day during the championship series.
- 5.4. On the last day of the regatta, no Warning signal will be made after 1500.

6. CLASS FLAG

- 6.1. The Class flag will be the class insignia in blue on a white background.

7. RACING AREA

- 7.1. Sailing instruction Appendix B shows the location of the racing area.

8. THE COURSES

- 8.1. The diagram in SI Appendix A shows the courses, including the order in which marks are to be passed, and the side on which each mark is to be left.
- 8.2. No later than the Attention signal (SI 11.2), the race committee signal boat will display the course, approximate magnetic bearing and distance to the 1st mark from the mid point of the starting line on a white board. This changes RRS 27.1.
- 8.3. The information will be arranged vertically.

Example:

LX		Course
300		Approximate magnetic bearing to Mark 1
1.5		Approximate distance to Mark 1. (nautical miles)

- 8.4. There will be a leeward gate; boats shall sail between the gate marks from the direction of the previous mark and round either gate mark.
- 8.5. The race committee will broadcast the course, bearing and distance information before the Warning signal. Failure to broadcast or to receive this notification shall not constitute grounds for granting redress. This changes RRS 62.1(a).

9. MARKS

- 9.1. Marks 1, 3A and 3B will be orange five (5) foot tetrahedrons. Mark 2 will be a yellow five (5) foot tetrahedron
- 9.2. New marks, as provided in SI 12.1, will be yellow five (5) foot tetrahedrons.
- 9.3. A race committee boat signalling a change of the next leg of the course is a mark as provided in SI 12.2.
- 9.4. Race committee boats may be stationed beyond each mark and the finish line, identified as described in SI 21. Hindrance by such a boat or her failure to be on station or to display her signal shall not be grounds for granting redress. This changes RRS 62.1(a).

- 9.5. A race committee windward mark stake boat may display a large red panel to indicate the approximate location of the windward mark.

10. AREAS THAT ARE OBSTRUCTIONS

- 10.1. The following areas are designated as obstructions: None.

11. THE START

- 11.1. The Race Committee's midline/ primary signal boat (M/V "ONWARD") will display code flag LIMA as it departs the harbour.

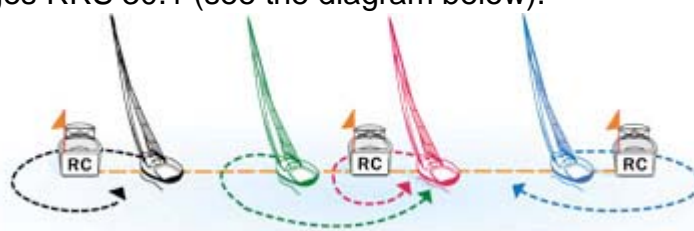
- 11.2. Races will be started by using RRS 26 with the following addition: An Attention signal (flag F with one sound)) will be made five (5) minutes before the Warning signal. Code Flag F will be removed with one sound one (1) minute before the Warning signal is made. The race committee will designate the course to be sailed before or with the Attention signal. This changes RRS 27.1.

- 11.3. The Starting Line:

- 11.3.1. The starting line will consist of three committee boats: port end line boat, mid-line signal boat, and starboard end line boat.

- 11.3.2. The starting line will be two line segments: one between a staff displaying an orange flag on the mid-line signal boat and a staff displaying an orange flag on the port end line boat, the other between a staff displaying an orange flag on the mid-line signal boat and a staff displaying an orange flag on the starboard end line boat.

- 11.3.3. When RRS 30.1 Round-an-End Rule is in effect, boats subject to this rule shall thereafter either: (a) sail from the course side across an extension of the starting line beyond either the port- or starboard-end line boat to the pre-course side before starting, or (b) round the mid-line signal boat before starting, leaving it to port. This changes RRS 30.1 (see the diagram below).



- 11.4. A boat starting later than 8 minutes after her starting signal will be scored Did Not Start without a hearing. This changes RRS 63.1 and A5.

- 11.5. Individual recalls and boats disqualified under RRS 30.3 will be broadcast using bow numbers (see SI 25.2). This is in addition to and changes RRS 29.1 and 30.3.

- 11.5.1. The flag shall be displayed until all such boats are completely on the pre-start side of the starting line or its extensions and have

complied with rule 30.1 if it applies, but no later than eight (8) minutes after the starting signal. This changes RRS 29.1

- 11.6. A boat whose bow number is displayed in accordance with RRS 30.3 and SI 11.5 shall leave the starting area and racecourse immediately. The boat shall not continue to race with a protest flag hoisted. The boat shall only lodge a claim for redress. If a boat continues to race after having been black-flagged, she shall be scored DNE without a hearing. This changes RRS 30.3 and 63.1. The race committee may notify a black flagged boat at any point on the race course. A boat not seeing or hearing her black-flag notice shall not be grounds for granting redress. This changes RRS 62.1(a).
- 11.7. Individual and General Recall flags will be displayed by all 3 race committee starting line boats.
- 11.8. In the event of a General Recall, a race committee chase boat displaying a General Recall flag may precede the fleet.
- 11.9. In the event of a General Recall, the race committee will display the warning signal for a new start for the recalled class in accordance with RRS29.2 and follow the instruction of SI 8.5.
- 11.10. In the event of a postponement or abandonment before the start of a race, the race committee will follow the instruction of SI 11.2 and display the Attention signal, one minute after lowering the postponement or abandonment signal.

12. CHANGE OF THE NEXT LEG OF THE COURSE

- 12.1. To change the next leg of the course, the race committee will lay a new mark (or move the finishing line) and remove the original mark as soon as practicable. When in a subsequent change a new mark is replaced, it will be replaced by an original mark.
- 12.2. Except at a gate, boats shall pass between the race committee boat signalling the change of the next leg and the nearby mark, leaving the mark to port and the race committee boat to starboard. This changes RRS 28.1.

13. THE FINISH

- 13.1. For downwind finishes, the finishing line will be between a staff displaying an orange flag on the finishing line boat and a staff displaying an orange flag on a nearby race committee boat. The Finishing Line will be located beyond the leeward gate.
- 13.2. For windward finishes, the finishing line will be between a staff displaying an orange flag on the finishing line boat and a staff displaying an orange flag on a nearby race committee boat.
- 13.3. When the course is shortened at mark 1, mark 1 will be attached to the port-end race committee boat. The finishing line will be as described in SI 13.2. This changes RRS 32.2(a).

13.4. Flag “Second Substitute” displayed (no sound signal) by the race committee finish boat while boats are finishing indicates that another race will be sailed.

13.4.1. Boats should remain in the vicinity of the finishing area if finishing under 13.1.

13.4.2. Boats should sail downwind in the vicinity of the leeward gate if finishing under 13.2 or 13.3.

14. PENALTY SYSTEM

14.1. RRS 44.1 and 44.2 are changed so that only one turn, including one tack and one gybe, is required, except that if the penalty is given afloat by the jury, it shall be two tacks and two gybes.

14.2. A boat that has taken a penalty or retired under RRS 31.2 or 44.1 shall complete an acknowledgment form at the race office within the protest time limit.

14.3. RRS Appendix P will apply as changed by SI 14.1 and 14.4.

14.4. RRS P2.3 will not apply and RRS P2.2 is changed so that it will apply to any protest after the first one.

15. TIME LIMITS

15.1. Time limits are as follows:

<u>Time limit</u>	<u>Mark 1 time limit</u>
110 minutes	45 minutes

- 15.2. If no boat has passed Mark 1 within the Mark 1 time limit the race will be abandoned.
- 15.3. All boats not finishing within 30 minutes of the finish time of the first boat to finish a race shall be scored "TLE" (Time Limit Expired) without a hearing. A "TLE" score shall be two more points than the number of boats that have finished within the time limit. This changes RRS 35, A 4.1, A 4.2 and A11.

16. PROTESTS AND REQUESTS FOR REDRESS

- 16.1. Protest forms are available at the race office. Protests shall be delivered there within the protest time limit.
- 16.2. The protest time limit is 60 minutes after the hoisting of Flag B – SI 4.3. This will be hoisted 30 minutes after the race committee signal boat docks. The race committee docking time will be posted on the official notice board before hoisting of Flag B. The same time limit applies to protests by the race committee and jury about incidents they observe in the racing area. This changes RRS 61.3 and 62.2.
- 16.3. The Jury notice board is located at the SCYC Race Office, located in the dry storage yard.
- 16.4. Notices will be posted within 30 minutes of the protest time limit to inform competitors of hearings in which they are parties or named as witnesses.
- 16.5. Hearings will be held in the jury room located in the Santa Cruz dry storage yard.
- 16.6. Notices of protests by the race committee or jury will be posted to inform boats under RRS 61.1(b).
- 16.7. It is each boat's sole responsibility to check the Jury notice board at the end of the protest filing time to see if she is cited in a protest. Failure of any competitor to appear when called for a hearing will be considered by the Jury as grounds for proceeding under RRS 63.3(b).
- 16.8. A list of boats that, under SI 14.3, have acknowledged breaking RRS 42 or have been disqualified by the jury will be posted with the hearing schedule.
- 16.9. Breaches of SI 1.5, 14.2, 18, 19.2, 23, 24, 29, 31 and 32 will not be grounds for a protest by a boat. This changes RRS 60.1(a). Penalties of these breaches and other than breaches of RRS Rules of Part 2 and Class Rules may be less than disqualification at the discretion of the Jury.
- 16.10. On the last day of the regatta a request for reopening a hearing shall be delivered within the protest time limit if the party requesting reopening was informed of the decision on the previous day; no later than 20 minutes after the party requesting reopening was informed of the decision on that day. This changes RRS 66.
- 16.11. Decisions of the jury will be final as provided in RRS 70.4.
- 16.12. A mediation system will be in operation for an alleged breach of rules in RRS Part 2. The details of mediation are in SI Appendix C.
- 16.13. If a member of the Jury witnesses a breach of the RRS of Part 2 (excluding RRS 14), RRS 31 or Class rule C.10, he may indicate his observation with a whistle and a red flag and the hailing of the boat's bow

number. The boat may then exonerate herself by complying with SI 14.1, (two-turns penalty). If no penalty is taken the jury may protest.

16.14. If the Jury witnesses an incident that cannot be called with the red flag as above, it shall indicate that with a whistle and flag "U" and expect a competitor protest ashore if no boat exonerates herself.

16.15. Action or lack of action by the jury under SI 16.13 and SI 16.14 shall not be grounds for granting redress. The jury boats may be positioned anywhere on the course area. Their position at any time shall not be grounds for granting redress. This changes RRS 62.1.

17. SCORING

17.1. The Low Point scoring system of RRS Appendix A, as changed below shall apply.

17.2. **Five (5)** races are required to be completed to constitute a series.

17.3. When fewer than 6 races have been completed, a boat's series score will be the total of her race scores.

17.4. When from 6 to 10 races have been completed, a boat's series score will be the total of her race scores excluding her worst score.

17.5. The scoring abbreviation for a discretionary penalty imposed under SI 16.9 will be "DPI". This changes RRS A11.

17.6 Boats scored "TLE" will be scored points equal to the number of boats finishing within the time limit plus two points by the race committee without a hearing. This changes rule A4.2, A5, and A11.

17.7 To request correction of an alleged error in posted race or series results, a boat shall complete a 'Scoring Inquiry Form' available at the Race Office and submit the completed form to the PRO.

18. SAFETY REGULATIONS

18.1. A boat that retires from a race shall notify the race committee as soon as possible.

19. REPLACEMENT OF CREW OR EQUIPMENT

19.1. Substitution of competitors will not be allowed without the prior written approval of the jury chairman. Competitors desiring to substitute crew must have crew members weighed-in prior to 0800 on race day at the Race Office.

19.2. Substitution of damaged or lost equipment will not be allowed unless approved by the jury chairman. Requests for substitution shall be made to the jury chairman at the first reasonable opportunity.

20. EQUIPMENT AND MEASUREMENT CHECKS

20.1. A boat or equipment may be inspected at any time for compliance with the class rules and sailing instructions. On the water, a boat can be instructed by a measurer's representative to proceed immediately to a designated area for inspection.

21. OFFICIAL BOAT

21.1. Official boats will be marked as follows:

Mid-line Signal Boat	Blue Race Committee flag
Port-end line boat	Blue Race Committee flag
Starboard-end line boat	Blue Race Committee flag
Windward mark/stake boat	Blue Race Committee flag
Start line chase boat	Blue Race Committee flag
Jury boats	White Flag with Blue 'J'
Press Boats	White Flag with Red 'P'
Measurement Boat	Code Flag "O" Oscar

22. COACH BOATS, SUPPORT BOATS, PRESS BOATS & SPECTATOR BOATS.

22.1. Team leaders, coaches and other support personnel shall stay outside areas where boats are racing from the time of the preparatory signal until all boats have finished or the race committee signals a postponement, general recall or abandonment.

22.2. All support boats shall have completed a registration form, which identifies the boat and the competitor(s) it will be supporting, and filed it with the registration desk at the race office, before the close of registration, 1500 Saturday May 7, 2007. Support boats shall be marked with a yellow flag with an assigned number, supplied by the Organizing Authority; it shall be flown at all times during the regatta.

22.3. Marine Operations instructions shall be provided to all support boats at registration. Support Boats shall conform to these instructions. The Jury may take action against the boats associated with any Support Boat that does not comply with these instructions.

23. HAUL-OUT RESTRICTIONS

23.1. Boats shall not be hauled out during the regatta except with and according to the terms of prior written permission of the jury chairman.

24. DIVING EQUIPMENT AND PLASTIC POOLS

24.1. Underwater breathing apparatus (including snorkels) and plastic pools or their equivalent shall not be used around boats between the preparatory signal of the first race of the Championship Series and the end of the regatta.

25. RADIO COMMUNICATION

25.1. A boat shall neither make electronic transmissions while racing nor receive radio communications not available to all boats. This restriction includes mobile telephones.

25.2. The race committee will use VHF channel (69) to communicate to the fleet, including the location of the starting area, countdown to the start, OCS bow numbers, General Recalls and Postponements. Failure to make these broadcasts or failure to hear them shall not constitute grounds for granting redress. This changes RRS 62.1.

- 25.3. The race committee may not acknowledge any radio transmission except in the case of an emergency, and shall not enter into dialogue with competitors.
- 25.4. Competitors shall not use any electronic device (including scanners) which can receive UHF frequencies from 0830 until their last finish for the day.

26. PRIZES

26.1. Prizes will be given as follows:

- 26.1.1. Dailey prizes will be awarded to 1st, 2nd, and 3rd places for each race.
- 26.1.2. Prizes will be awarded to the top eight overall, as well as to the top five Corinthian teams
- 26.1.3. The “Melges Performance Trophy” will be presented to the fleet overall winner.
- 26.1.4. The “Challenge Henri Samuel Trophy” will be presented to the best Corinthian team.
- 26.1.5. The Santa Cruz Yacht Club’s “Commodore’s Trophy” will be presented to the winner of the Pre-Worlds event.

27. DISCLAIMER OF LIABILITY

- 27.1. Competitors participate in the regatta entirely at their own risk. See RRS 4, Decision to Race.
- 27.2. The organizing authority will not accept any liability for material damage or personal injury or death sustained in conjunction with or prior to, during, or after the regatta.
- 27.3. Competitors will be required to sign a boat registration and liability release form before the close of registration.

28. INSURANCE

- 28.1. The safety of a boat and her entire management shall be the sole inescapable responsibility of the owner or owners’ representative.
- 28.2. The boat is required to hold adequate third-party insurance, and it is the owner or owners’ representative’s sole and inescapable responsibility to ensure that the insurance is in place and is adequate prior to participating in this event. The Organizing Authority may ask for a copy of your insurance binder.
- 28.3. No responsibility will be accepted by the US Melges Class Association, the Santa Cruz Yacht Club, the International Melges Class Association, or any other party involved in the organization of the regatta.

29. BOW NUMBERS and EVENT BOW STICKERS

- 29.1. Boats shall display bow numbers during the event. These, and instructions to position them will be supplied by the organising authority. It is the responsibility of the crew to ensure the numbers remain on the boat and obtain replacements as necessary.

29.2. Event bow stickers shall be attached to both sides of the boat's hull at all times while racing.

30. CAMERAS & ELECTRONIC EQUIPMENT

30.1. Boats may be required to carry cameras, sound equipment or positioning equipment as specified by the organising authority.

31. TRASH DISPOSAL

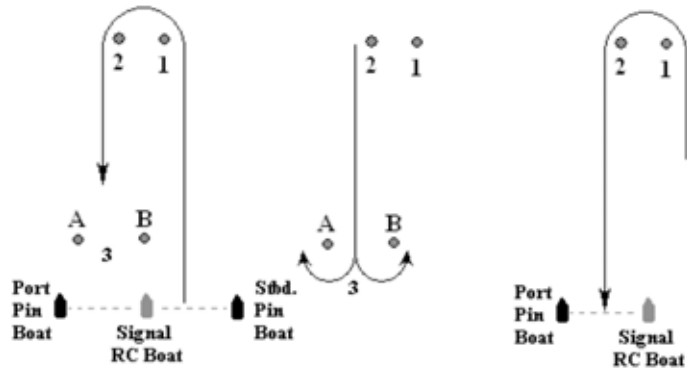
31.1. Boats shall not put trash in the water.

32. BERTHING

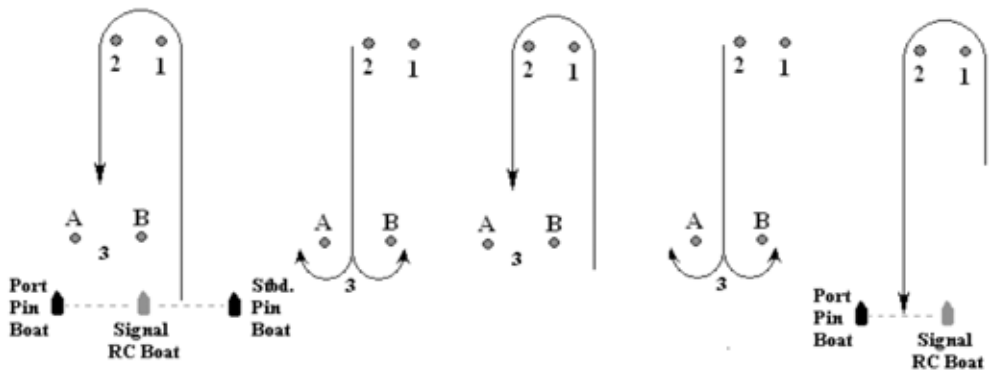
32.1. Boats shall be kept in their assigned places in the harbour.

SAILING INSTRUCTIONS
 APPENDIX - A
 COURSES & ROUNDING ORDER

Course L
Start - 1p-2p-3gate-1p-2p-Finish

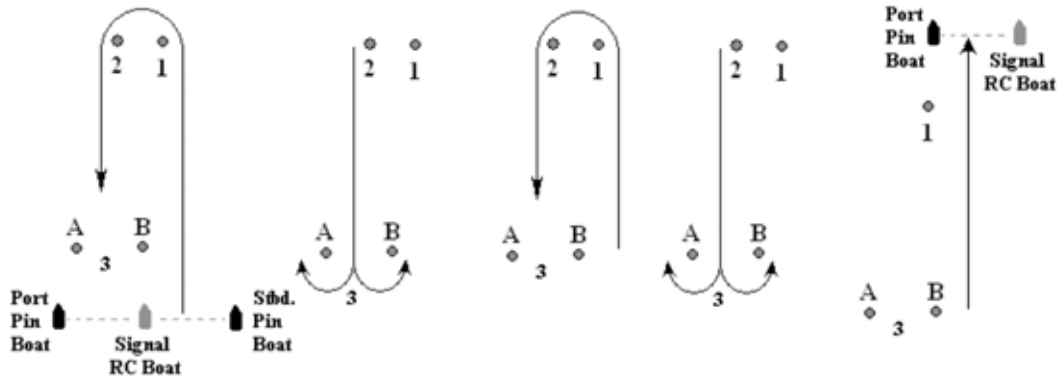


Course LX
Start - 1p-2p-3gate-1p-2p-3gate-1p-2p-Finish



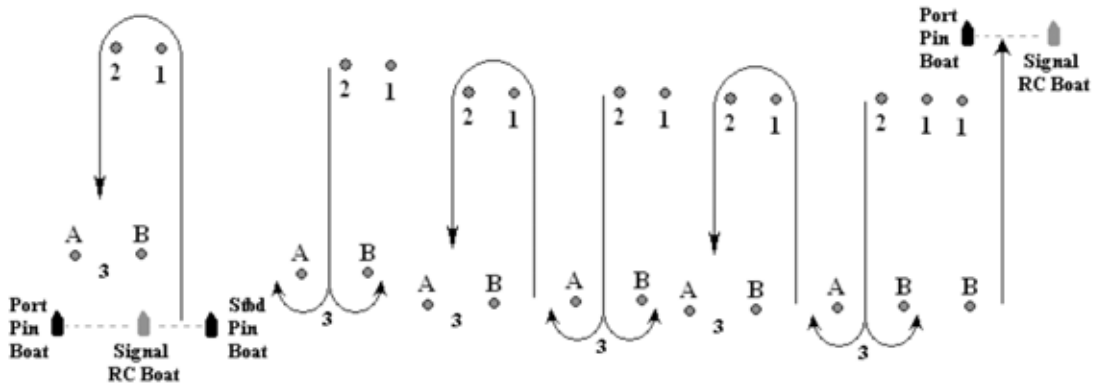
Course W

Start - 1p-2p-3gate-1p-2p-3gate-Finish

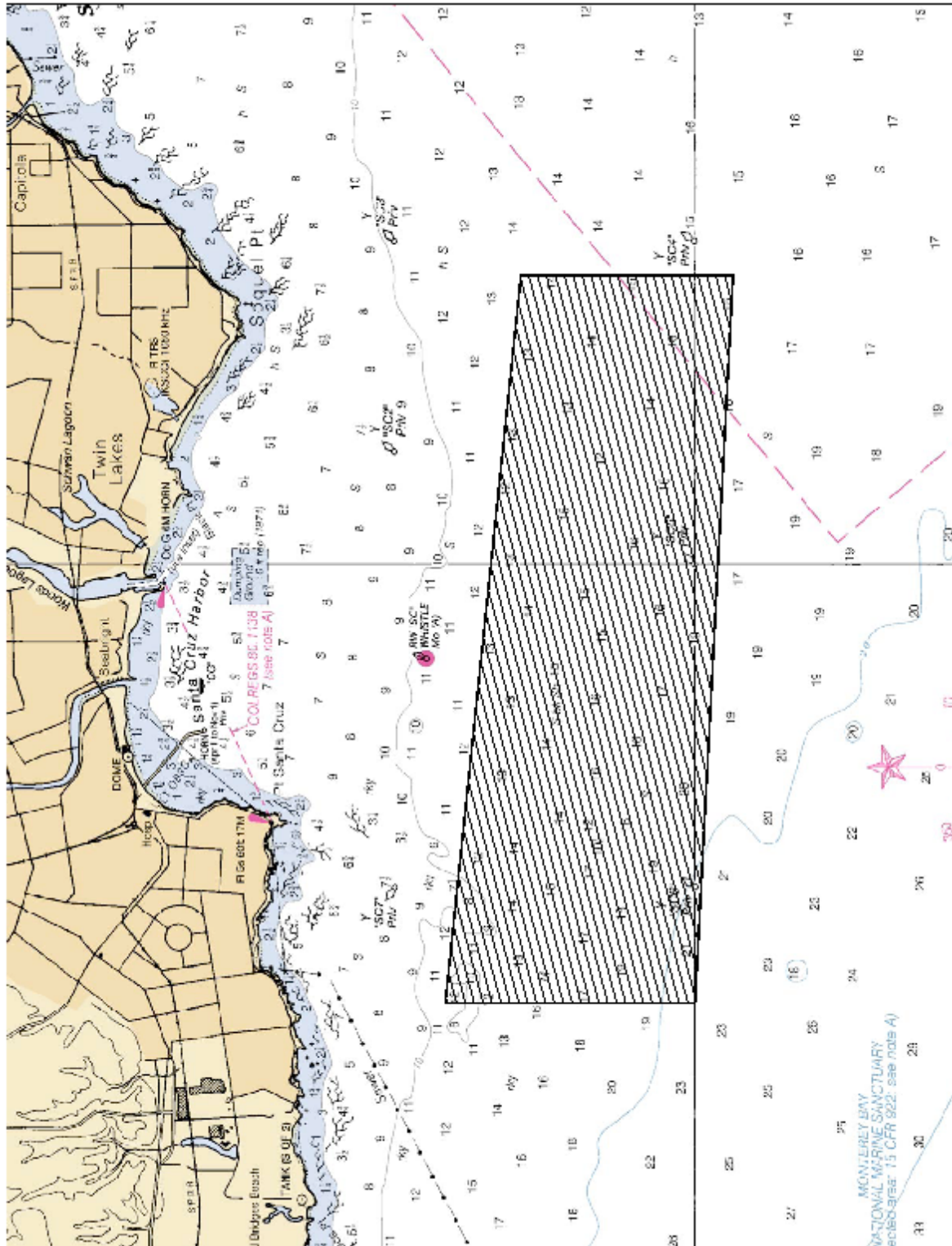


Course WX

Start - 1p-2p-3gate-1p-2p-3gate-1p-2p-3gate-Finish



SAILING INSTRUCTIONS
 APPENDIX - B
 RACE AREA



SAILING INSTRUCTIONS
APPENDIX - C
MEDIATION

1. After a protest has been lodged in accordance with the Sailing Instructions, both parties involved in protests alleging a breach of a rule of RRS Part 2 and only two boats shall be heard by a Mediator appointed by the Jury.
 - 1.1. In exception to the above, incidents where damage is involved shall not be subject to mediation, but shall be referred directly to the Jury for a hearing.
2. Only one representative from each boat involved, who shall have been on the boat at the time the incident occurred, shall attend the mediation hearing. No witnesses shall be allowed.
3. The validity of the protest, RRS 61, will be determined. If the appropriate parts of RRS 61 have been met mediation will continue. If the appropriate sections of RRS 61 have not been met, the mediator may rule the protest invalid. The protestor may accept the ruling or have the protest referred to the jury.
4. The mediator will have each party describe the incident, limiting each party to approximately 3 minutes. After hearing these descriptions, the mediator will offer one of the following opinions:
 - a.) No rule was broken.

If the protesting boat accepts this opinion she can agree to withdraw the protest and the protest is then settled.
 - b.) A rule was broken by one of the boats involved.

If that boat accepts this opinion she may accept a 40% scoring penalty and the protest is then settled.
 - c.) Both boats broke a rule.

If both boats accept this opinion and each agrees to accept a 40% scoring penalty then the protest is then settled.
 - d.) The mediator is unable to offer an opinion based on the brief description given by the parties.
5. Once the protest has been settled under 3.1, 3.2 or 3.3 above, the mediator shall record this on the protest form and the matter shall not thereafter be referred to the Jury and is not subject to requests for redress, reopening or appeal by any party.
 - 5.1. If however:
 - (i) The protestor does not withdraw the protest under 3.1 above; or
 - (ii) If a competitor does not accept the mediator's opinion that she broke a rule under 3.2 or 3.3; or
 - (iii) If the mediator is unable to offer an opinion under 3.4, the protest shall be submitted to the jury for a hearing.
6. If the mediator's opinion is not accepted, there shall be no further discussion of the incident with the parties and the testimony given at the mediation hearing

shall remain confidential and shall not be discussed with any person prior to the hearing.

7. If a party fails to attend, the mediation may still be heard, as in RRS 63.3(b).
8. When protests are submitted to the Jury, the mediator shall not be a member of the panel hearing the protest. However, he/she shall be present to ensure that the incidents are described in the same way as in mediation. If the facts given are different he may intervene to restate the original mediation details. The mediator shall not discuss the matter with jury members until after the Jury's decision has been posted.
9. Application of the 40% penalty shall be calculated in accordance with RRS 44.3, except that the penalty is modified to read 40%. This changes RRS 44.3.

SAILING INSTRUCTIONS

APPENDIX - D

COACH, SUPPORT, PRESS & SPECTATOR BOATS

COACH AND SUPPORT BOATS

1. Coach and support boats shall register with the race office during registration. They shall declare which boat or boats they are supporting.
2. Coach and support boats shall keep clear of the racing area at all times during racing
3. Any coach or support boat that interferes with another competitor or the racing in any way, including creating excess wash, or hinders an official boat carrying out its duties shall have their race boat or boats liable to a penalty at the discretion of the jury.
4. The penalty given by the jury is at their discretion, but shall be applied to the overall score and therefore not discarded.
5. No coach boat or support boat shall pass information in any way to a boat that is racing. See RRS 41. Breaches of this rule will be taken very seriously.
6. Coach and support Boats shall communicate only with the boats they are registered to, and only by means of voice between races. Closed VHF or mobile telephone communication is prohibited.
7. Coach and support boats shall display a flag, or other identification symbol, as may be required by the organizing authority.
8. All Melges 24 boats shall proceed to the racing area under their own power, unless specific permission has been granted by the International Jury for temporary engine problems.
9. There shall be no transfer of any goods or equipment from 0930 until after the finish of the last race of the day between Melges 24's and their coach or support boats.
10. Coach and support boats shall not go alongside their Melges 24's until after the finish of the last race of the day.
11. Boats that are subject to SI 20 shall not have any contact with their coach or support boats until cleared by the measurer's representative.
12. Any competitor may protest under this appendix.

PRESS AND SPECTATOR BOATS

1. All press and official spectator boats shall be registered with the organizing authority during registration.
2. Press and spectator boats shall not interfere with the racing in any way and shall stay at a distance outside the race course where their wake causes no problem.
3. The organizing authority may appoint one or more photo boats, which will be allowed within the race course.
4. Press and spectator boats shall display a flag, or other identification symbol provided by the organizing authority.
5. Press and spectator boats that have not operated in accordance with the rules of this Appendix may have their privileges revoked, at the sole discretion of the organizing authority.

SAILING INSTRUCTIONS
APPENDIX - E
US SAILING PRESCRIPTIONS

2005-2008 *US SAILING* PRESCRIPTIONS

Rule 68 After rule 68 add

US SAILING prescribes that:

- (a) A boat that retires from a race or accepts a penalty does not, by that action alone, admit liability for damages.
- (b) A protest committee shall find facts and make decisions only in compliance with the rules. No protest committee or *US SAILING* appeal authority shall adjudicate any claim for damages. Such a claim is subject to the jurisdiction of the courts.
- (c) A basic purpose of the rules is to prevent contact between boats. By participating in an event governed by the rules, a boat agrees that responsibility for damages arising from any breach of the rules shall be based on fault as determined by application of the rules, and that she shall not be governed by the legal doctrine of 'assumption of risk' for monetary damages resulting from contact with other boats.

Rule 76.1 After rule 76.1 add

US SAILING prescribes that an organizing authority or race committee shall not reject or cancel the entry of a boat or exclude a competitor eligible under the notice of race and sailing instructions for an arbitrary or capricious reason or for reason of race, color, religion, national origin, gender, sexual orientation, or age.

Rule 76.3 Add rule 76.3

76.3 *US SAILING* prescribes that a boat whose entry is rejected or cancelled or a competitor who is excluded from a race or series shall be, upon written request, entitled to a hearing conducted by the protest committee under rules 63.2, 63.3, 63.4 and 63.6.